

Disassembly Procedure

Please follow the information provided in this section to perform the complete disassembly procedure of the notebook. Be sure to use proper tools described before.

ASUS V1S Series Notebook consists of various modules. This chapter describes the procedures for the complete notebook disassembly. In addition, in between procedures, the detailed disassembly procedure of individual modules will be provided for your service needs.

The disassembly procedure consists of the following steps:

- Battery Module
- CPU Module
- Memory Module
- HDD Module
- Optical Drive Module
- Keyboard Module
- Top Case Module
- WLAN Module
- Motherboard Module
- LCD Module

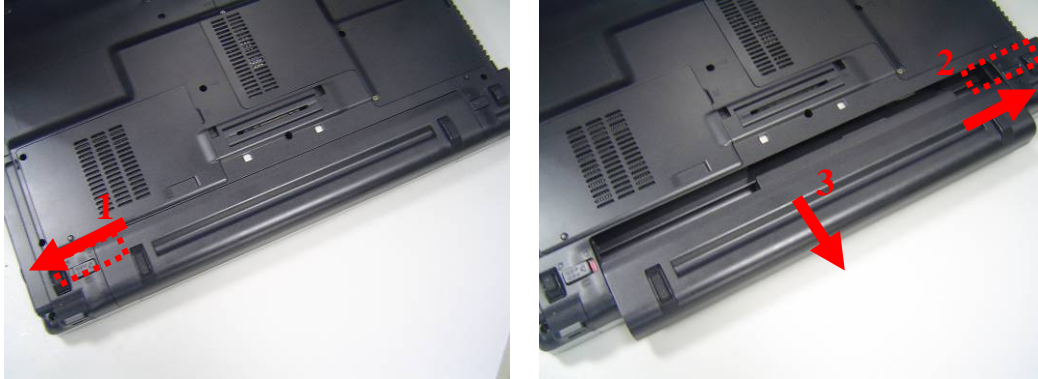
BATTERY

Battery Module

The illustration below shows how to remove the battery module.

Remove battery module

1. Turn the notebook over. Unlock and hold the latch, and remove the battery.



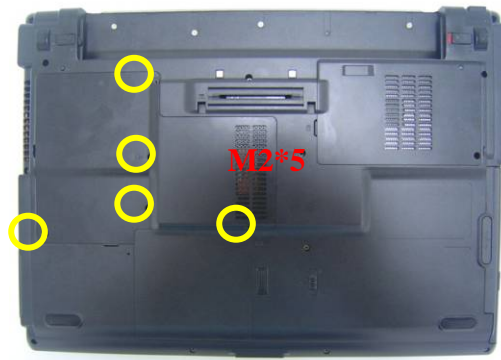
CPU MODULE
REMOVAL

CPU Module

The illustrations below show how to remove the CPU module from the notebook.

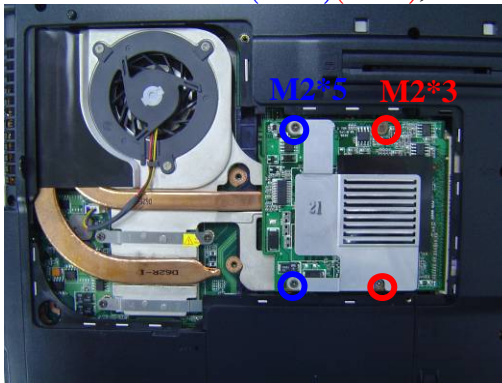
Removing CPU

1. Remove 5 screws (M2*5) and take the CPU door away.



Remove VGA board module

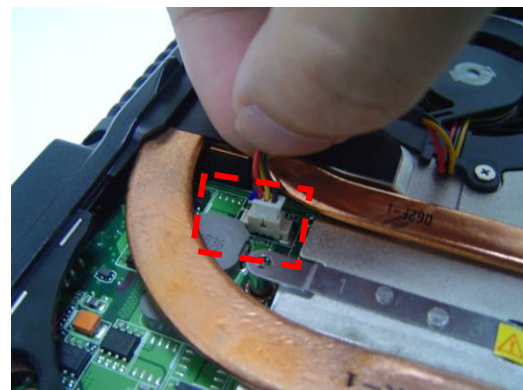
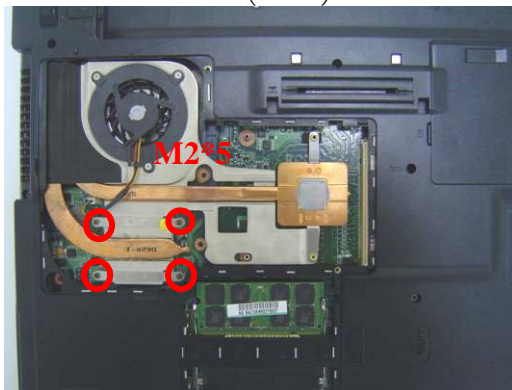
2. Remove 4 screws (M2*5) (M2*3), then remove the VGA board module



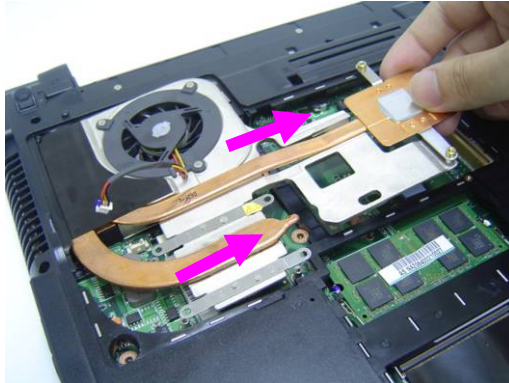
3. Remove the DIMM cover from the bottom case.



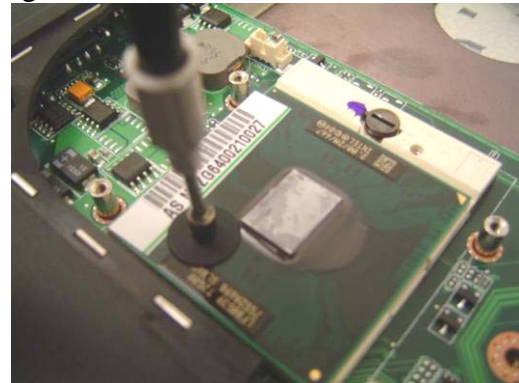
4. Remove 4 screws (M2*5) aside the CPU. And disconnect the CPU fan cable..



5. Remove the CPU thermal module from the bottom case.



6. Turn the non-removable screw here 180 degrees counter-clockwise to loosen the CPU.



7. Squeeze the vacuum handling pump and use it to lift the CPU away.



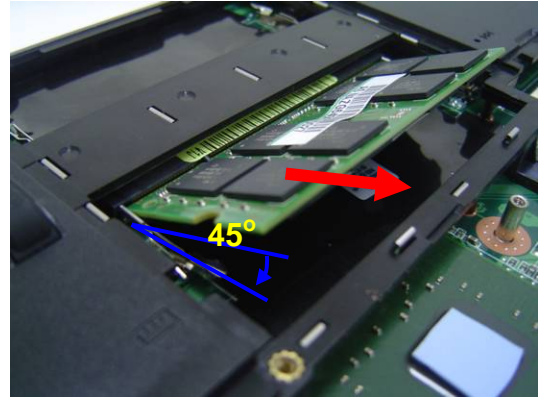
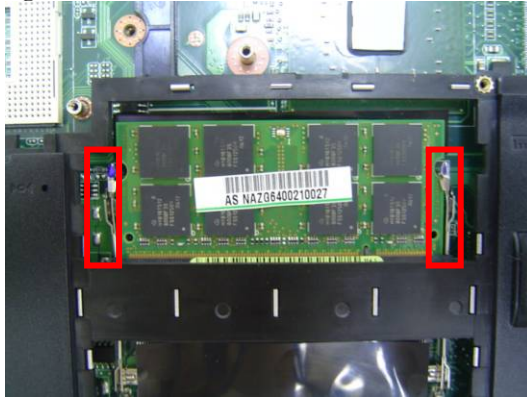
MEMORY
MODULE

Memory Module

The illustration shows how to remove the memory module from the notebook.

Removing Memory module

1. Pull two latches and pop the module up to a 45° angles, and then pulling out the module in that angle.



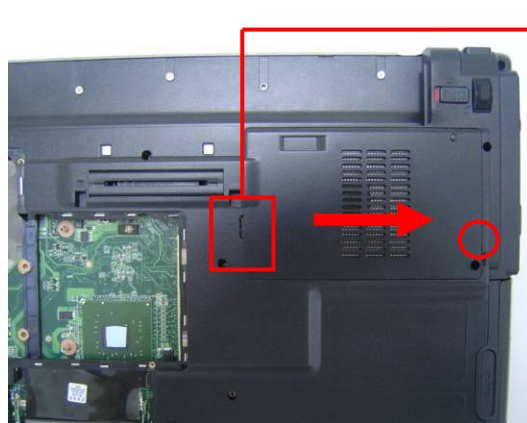
HDD
MODULE

HDD Module

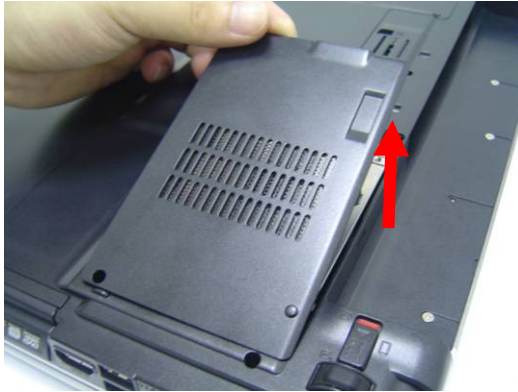
The illustrations below show how to remove the HDD module from the notebook.

Removing HDD Module

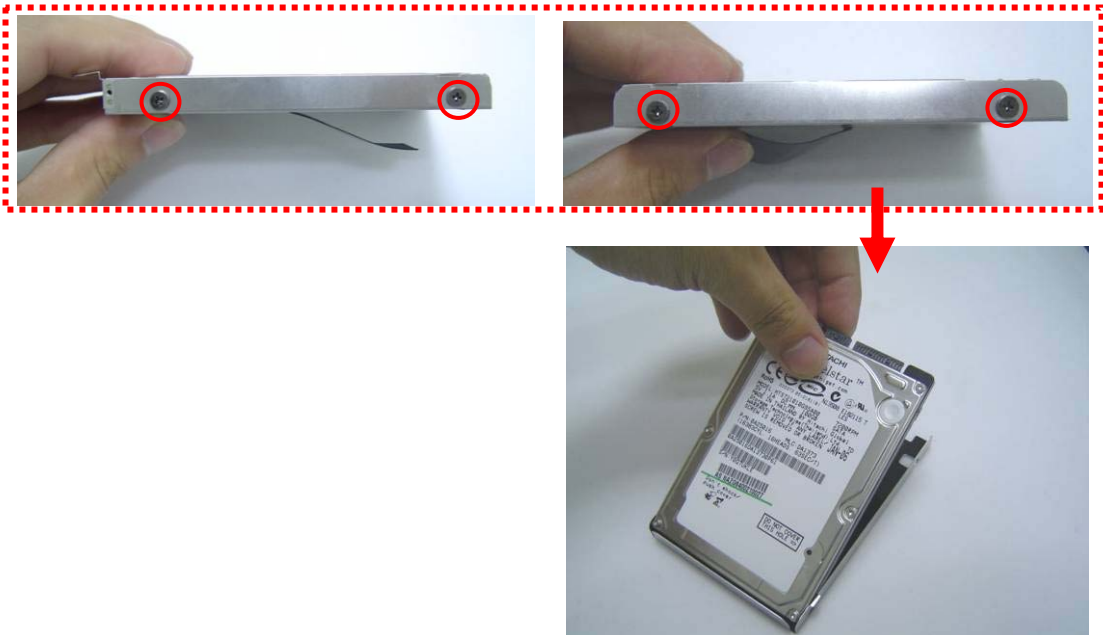
1. Remove 1 screw (M2*5) here, open HDD door by the tweezers and then take away the HDD door.



2. Remove the HDD door from the bottom case and then put the HDD module.



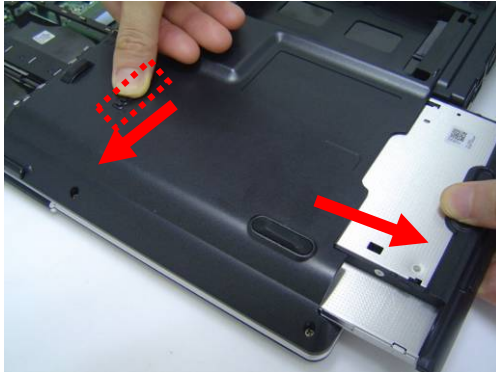
3. Remove 4 screws (M3*3) to separate HDD from HDD housing



OPTICAL
DRIVE
REMOVAL

Optical Drive Module

1. Unlock and hold the latch, and remove the ODD module.



KEYBOARD

Keyboard Module

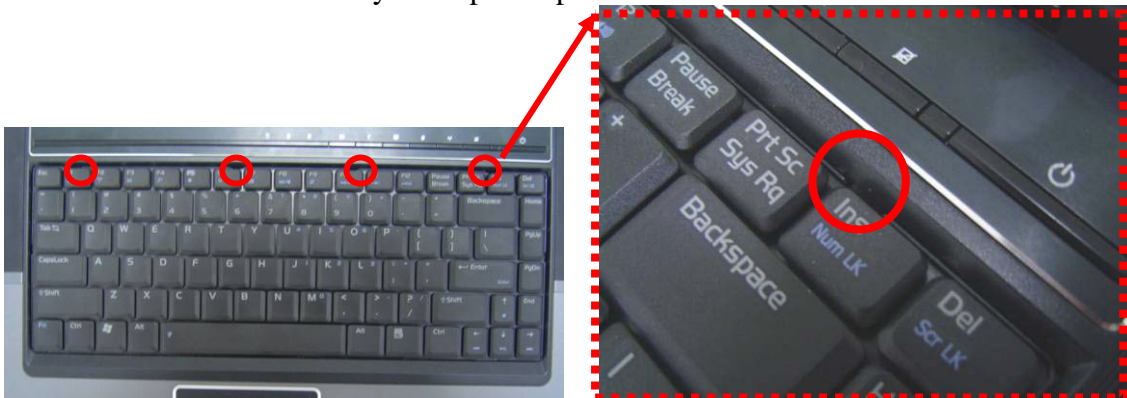
The illustration of below shows how to remove the keyboard

Removing Keyboard

1. Remove 1 screw (M2*5) here, and then turn over the notebook.



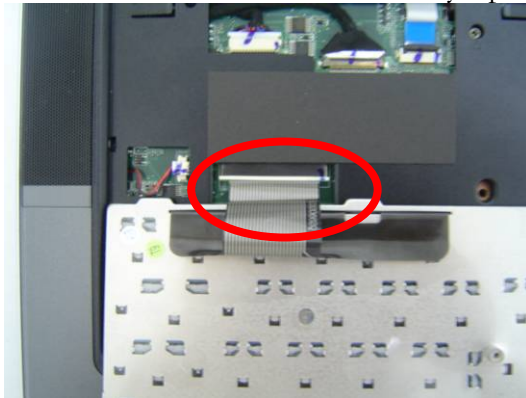
2. Push the 4 latches in (F1, F6, F10, Ins) with a pair of tweezers or a single-slotted screwdriver and lift the keyboard plate up.



3. Lay the keyboard down over the Top case. ***Do not remove the keyboard yet.**
The keyboard cable is still attached.

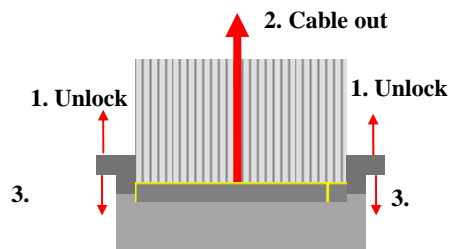


4. Disconnect the FPC connector by a pair of tweezers.

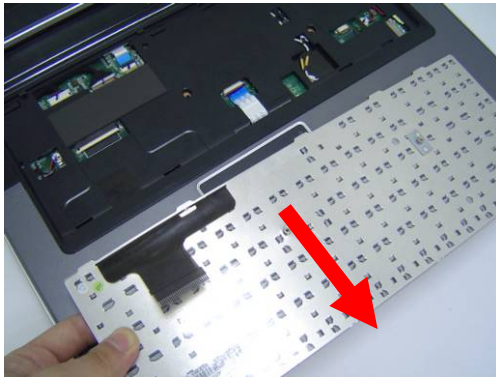


Removing Keyboard Cable

1. Use a flexible connector tool to unlock the cable connector on both ends (no. 1).
2. Carefully pull out the keyboard cable (no. 2) with a pair of tweezers.
3. Lock the connector (no. 3) again to avoid possible breakage.



4. Remove keyboard from the top case.



TOP CASE
MODULE

Top Case Module

The illustrations below show how to disassemble and remove the top case module of the notebook. The module contains the top case itself.

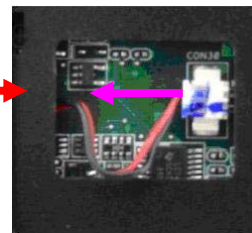
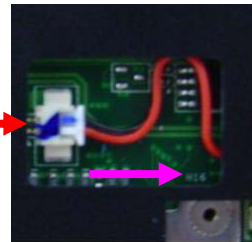
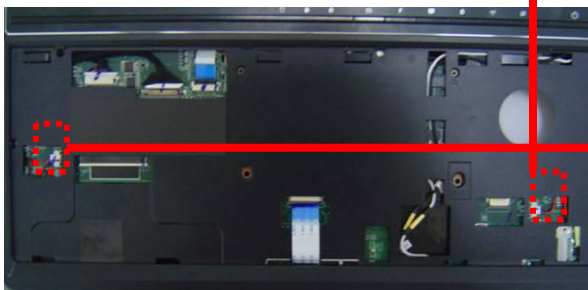
TOP CASE
REMOVAL

Removing Top Case Module

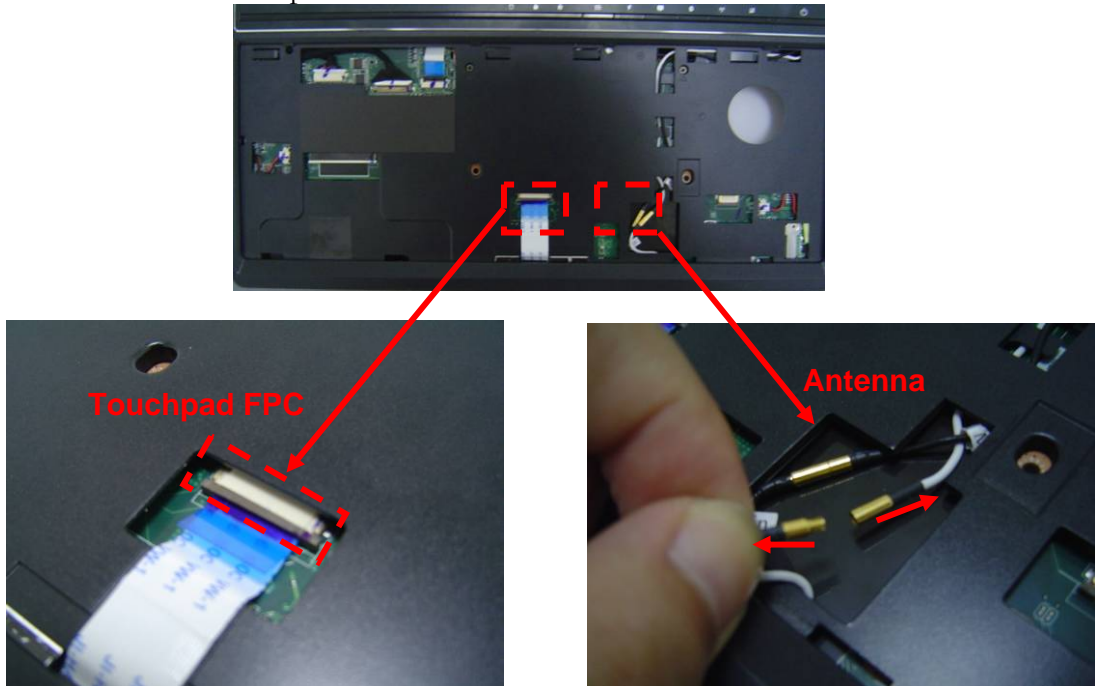
1. Use a pair of tweezers to remove both hinge Cover.



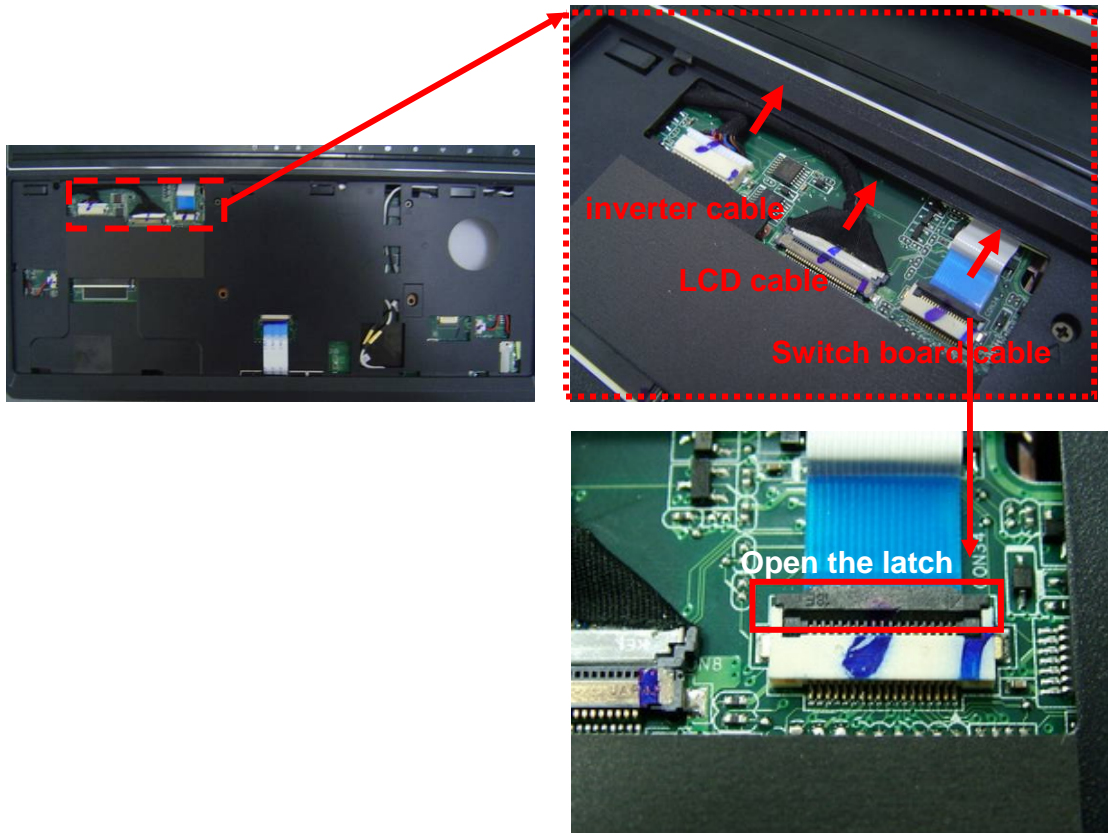
2. Use a pair of tweezers to disconnect both speaker cables.



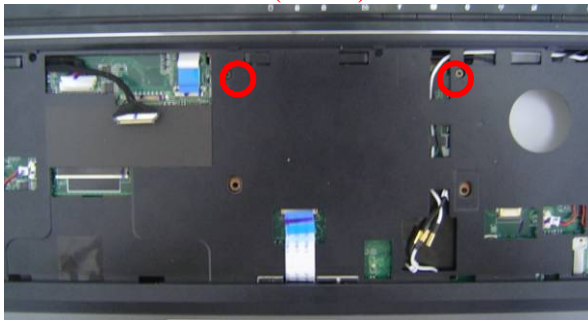
3. Disconnect the touchpad FPC and antenna.



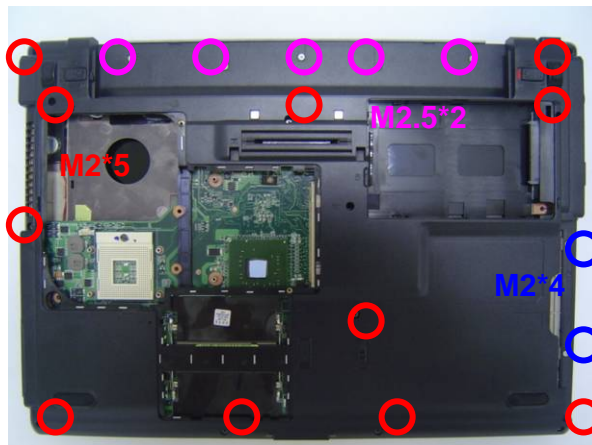
4. Disconnect the LCD cable and inverter cable and switch board FFC.



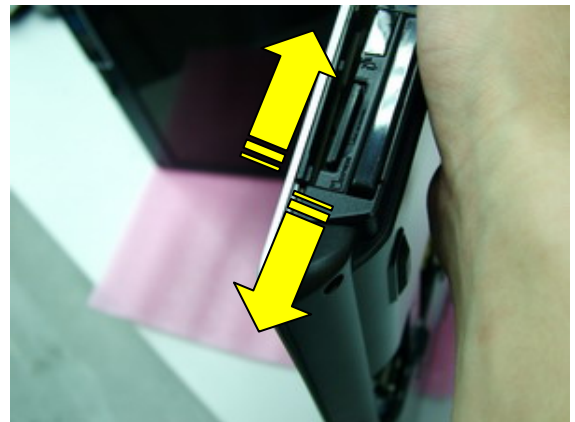
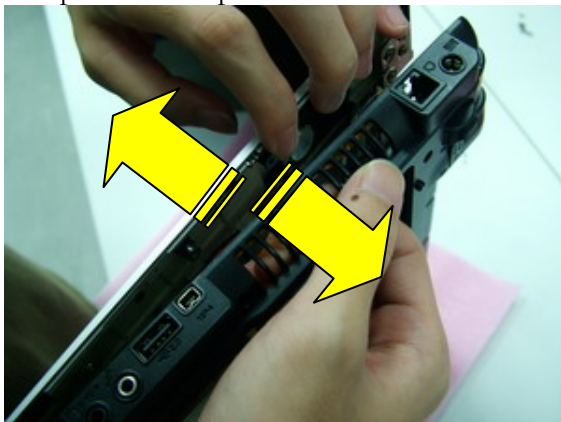
5. Remove 2 screws (M2*5) here.



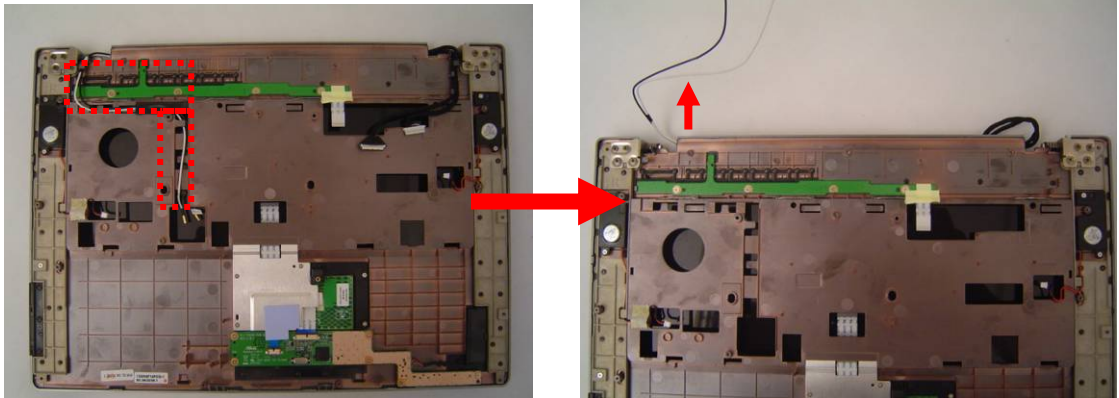
6. Turn over the notebook and then remove 17 screws here.



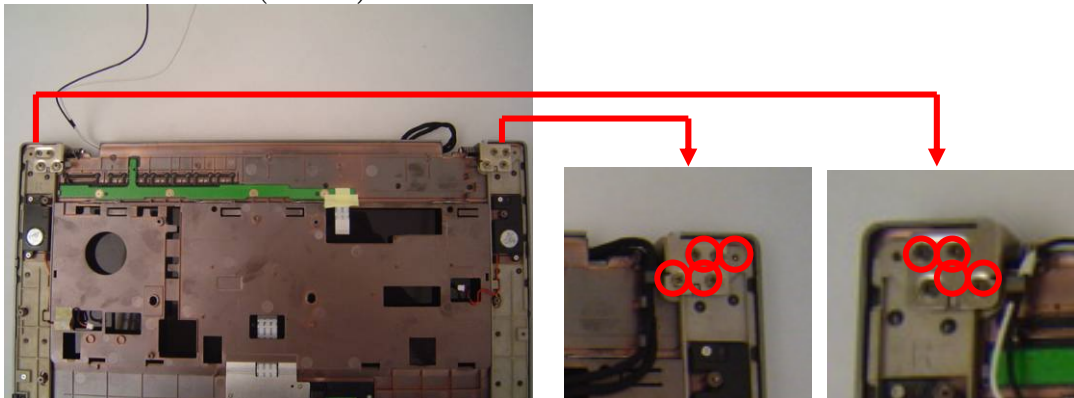
7. Separate the Top case from the bottom case.



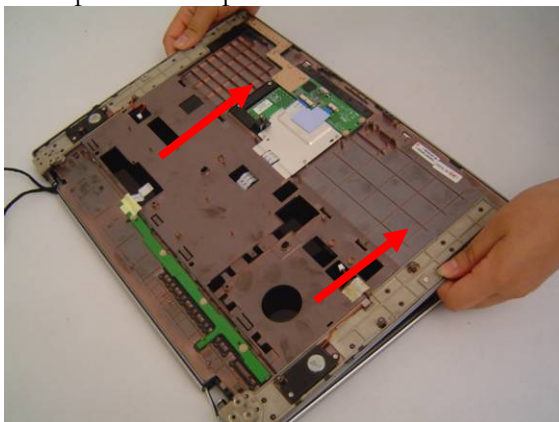
8. Separate the antenna from the top case.



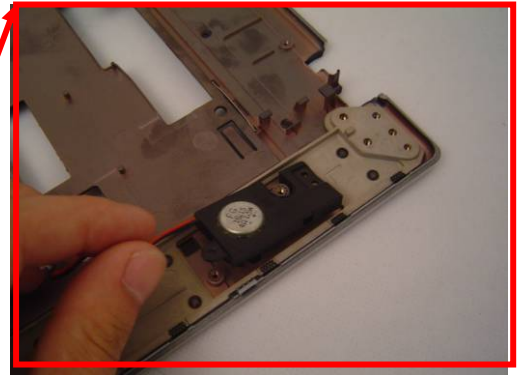
9. Remove 8 screws (M2.5*6) here.



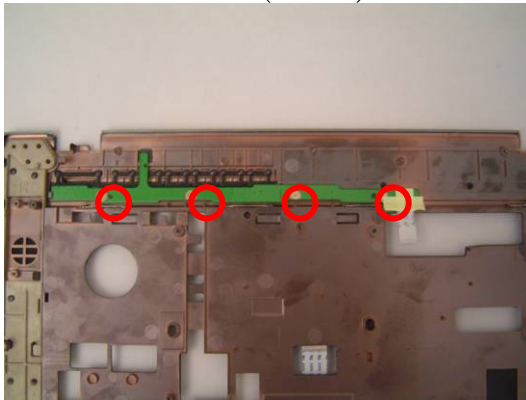
10. Separate the top case from the LCD module.



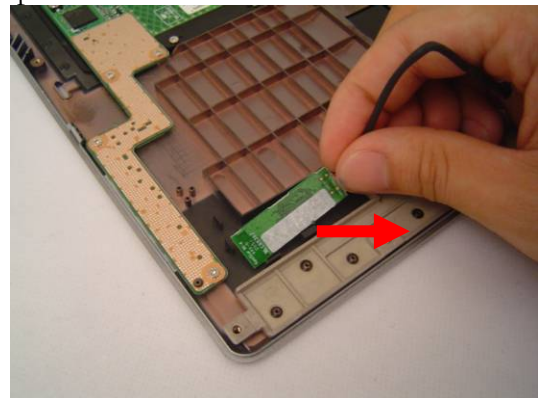
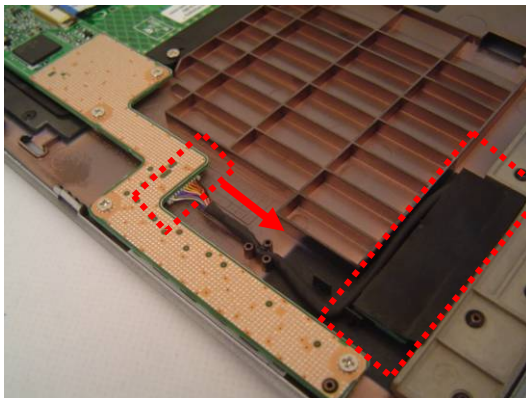
11. Remove 4 screws (M2*3) here and then take away the speaker.



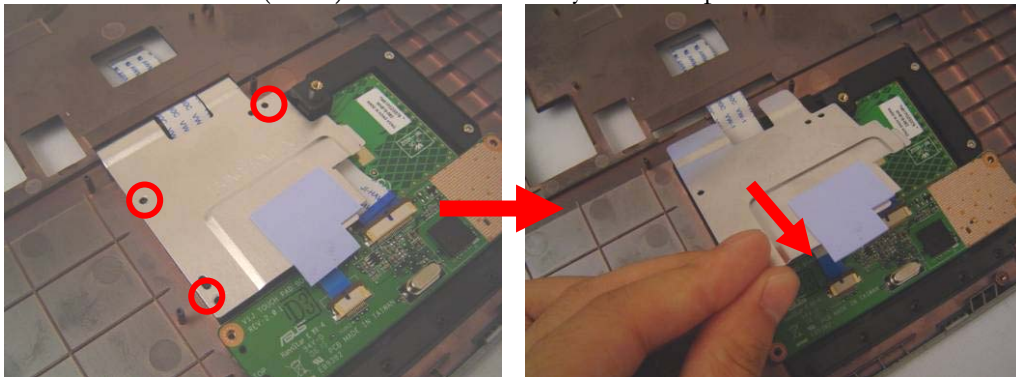
12. Remove 4 screws (M2*2.5) here then take away the switch board.



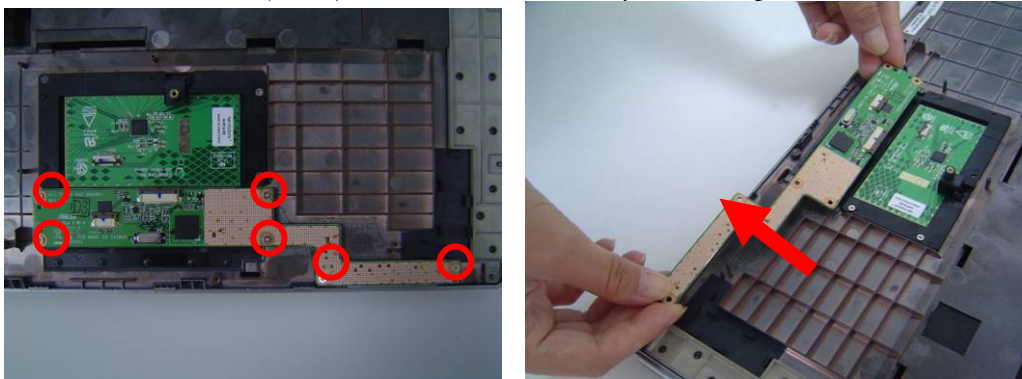
13. Disconnect the Bluetooth cable and remove Bluetooth Mylar.
Then remove Bluetooth module from the top case.



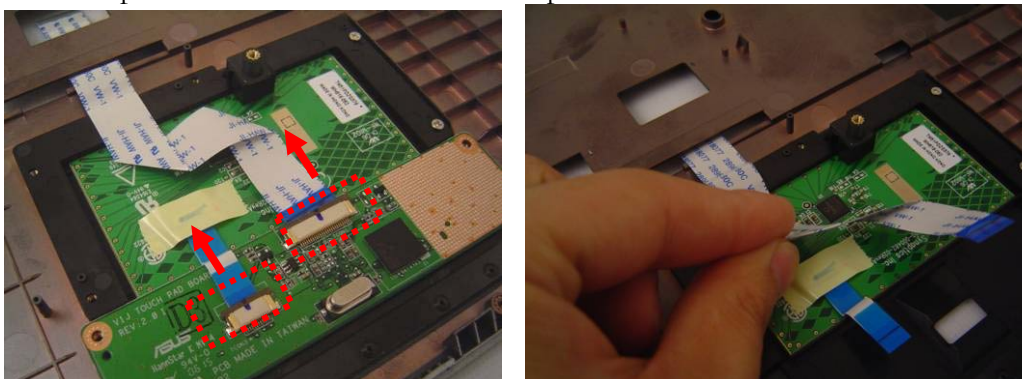
14. Remove 3 screws (M2*3) here then take away the touchpad bracket.



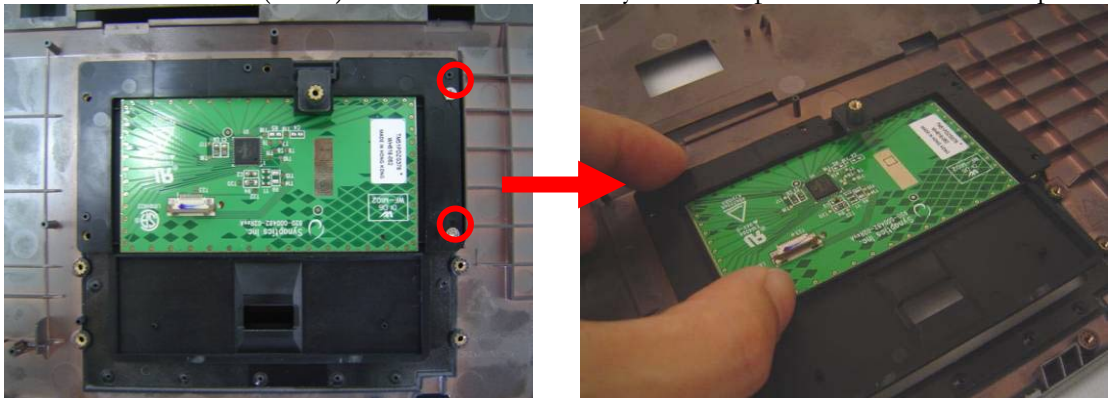
15. Remove 6 screws (M2*3) here and then take away the touchpad board.



16. Use a pair of tweezers to disconnect touchpad cable and FFC cable..



17. Remove 2 screws (M2*3) here and then take away the touchpad module from the top case.



WLAN
MODULE

WLAN Module

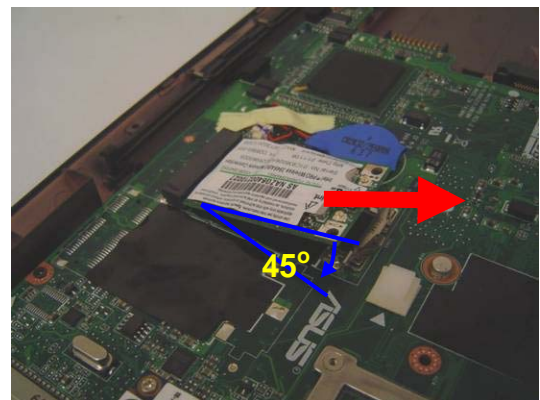
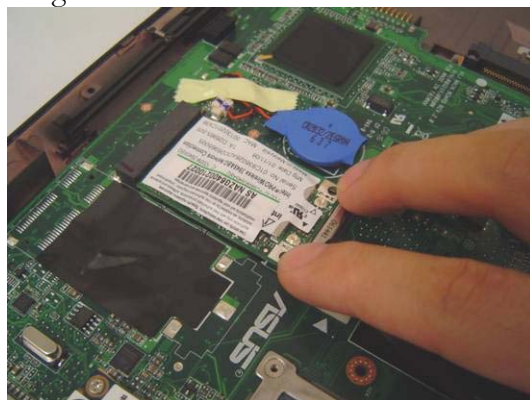
The illustrations below show how to remove the WLAN module from the notebook.

Remove WLAN module

1. Remove 2 Antenna cables from Wireless LAN Module



2. Pull two latches and pop the module up to a 45° angles, and then pulling out the module in that angle.



3 G CARD

&

ROBSON

CARD

3 G Card and Robson Card

The disassembly method of 3 G card and Robson card goes the same with that of the WLAN module.



3 G card



Robson card

MOTHERBOARD

Motherboard

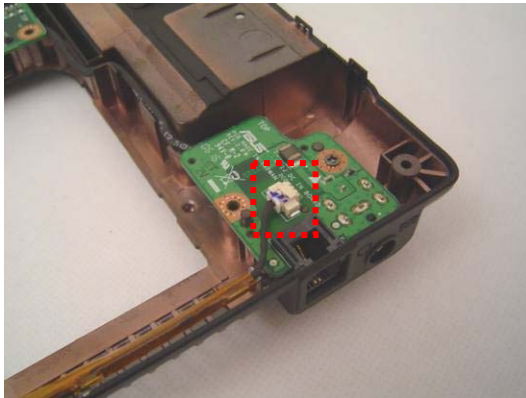
The illustrations below show how to disassemble and remove the Motherboard.

MOTHERBOARD

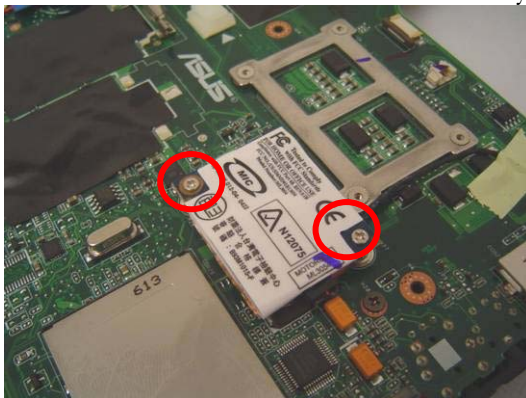
REMOVAL

Removing Motherboard

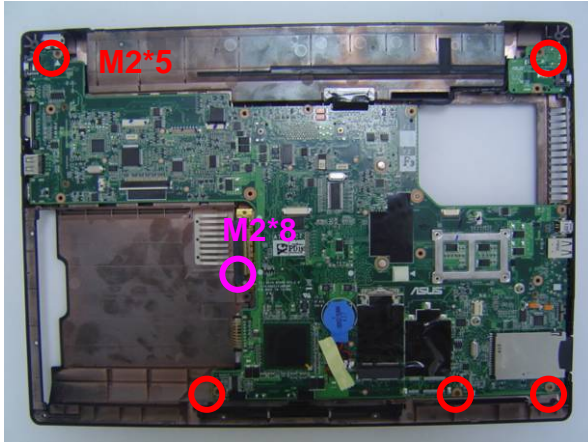
1. Disconnect the modem cable to motherboard.



2. Remove 2 screws here and then take away the modem module.



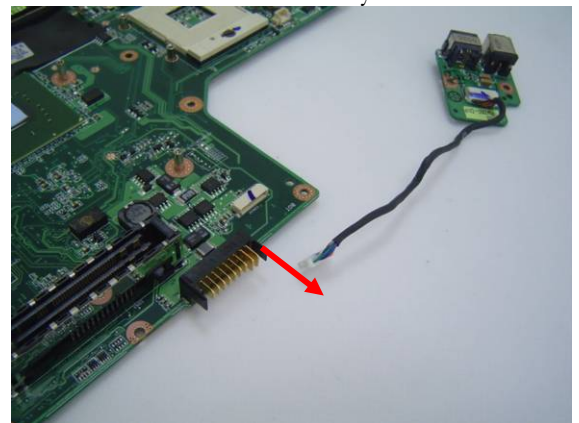
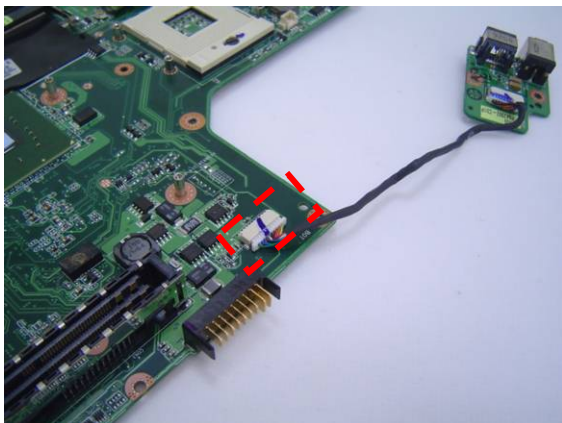
3. Remove 6 screws here.



4. Separate the Motherboard from the bottom case.



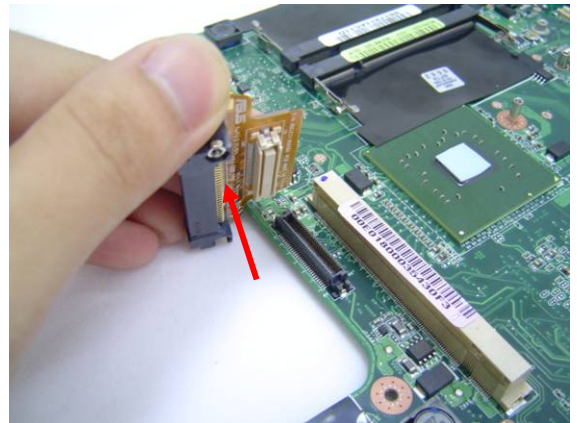
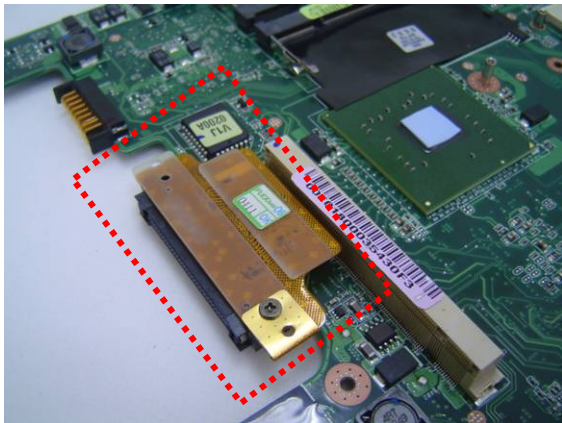
5. Disconnect the DC IN board cable from the motherboard and then take away the board.



6. Remove the 1 screw here the take away the TPM Board.



7. Disconnect the ODD FPC from the mother board.



LCD MODULE

LCD Module

The illustrations below show how to remove and disassemble the LCD module. The module contains LCD panel, Inverter board, LCD bezel, LCD back cover.

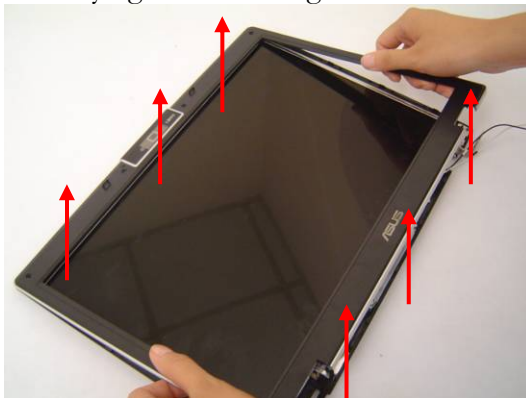
LCD MODULE
DISASSEMBLY

Disassembling LCD Module

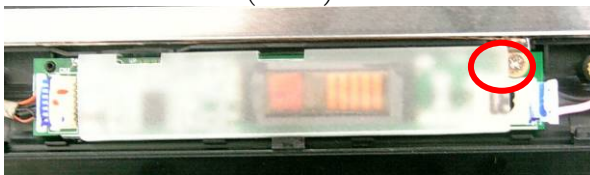
1. Remove 6 rubber pads and 6 screws (M2*5) from LCD module.



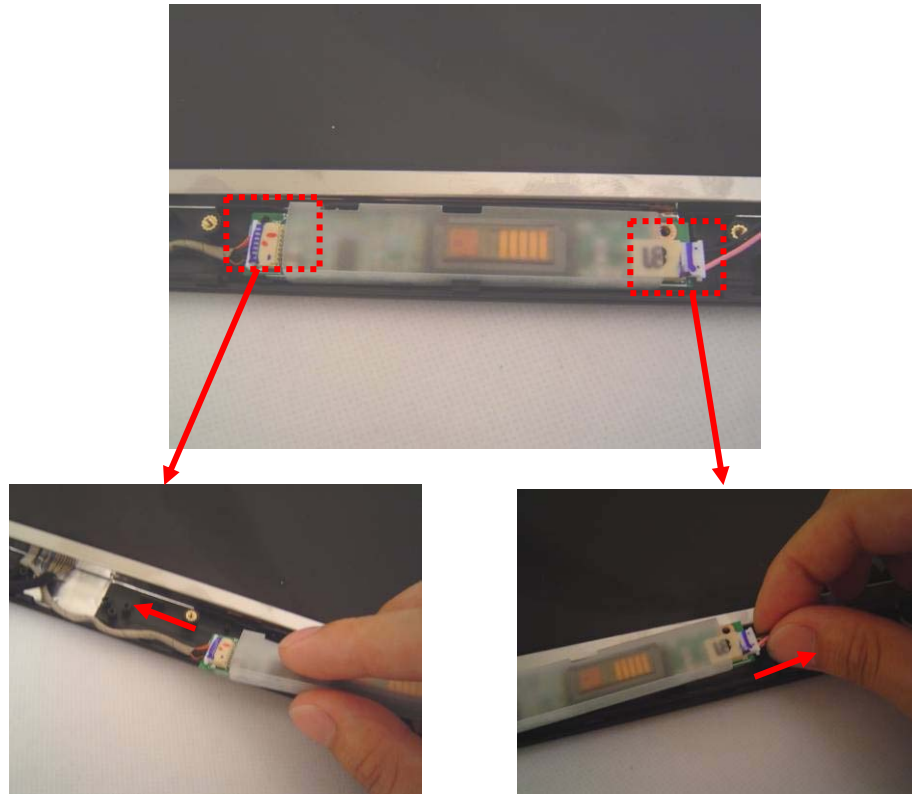
2. Prying the inside edges of the LCD bezel, and then separates it from LCD back cover.



3. Remove 1 screw (M2*3) here.



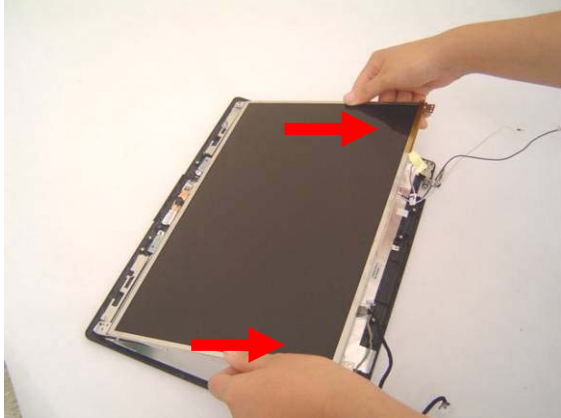
4. Disconnect the LCD cable. and inverter cable and then remove inverter board.



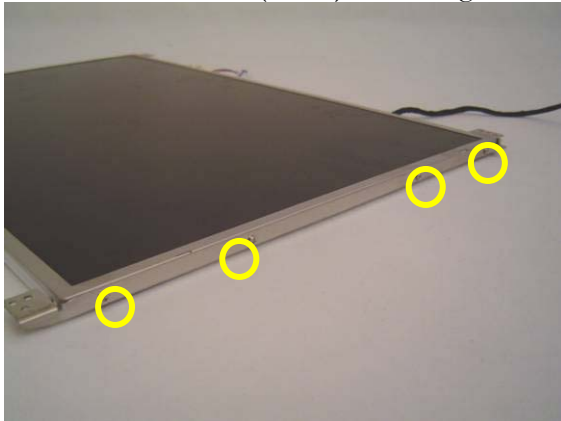
5. Remove 4screws (M2*5) and take away the LCD panel.



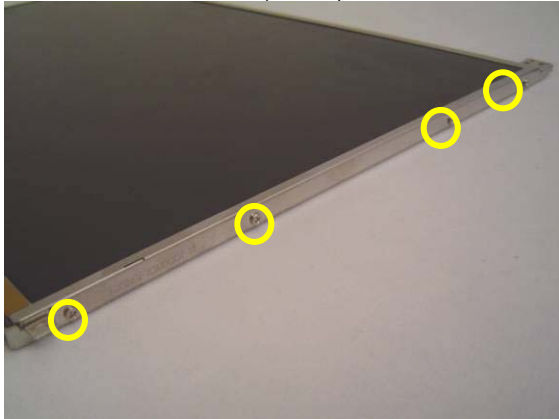
6. Remove the LCD plane from the LCD back cover.



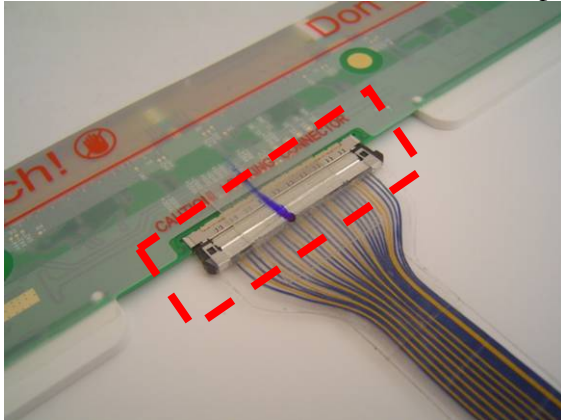
7. Remove 4 screws (M2*3) on the right LCD bracket to disassemble the LCD bracket.



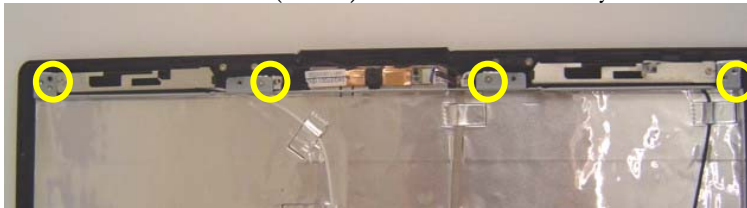
8. Remove 4 screws (M2*3) on the left LCD bracket to disassemble the other LCD bracket.



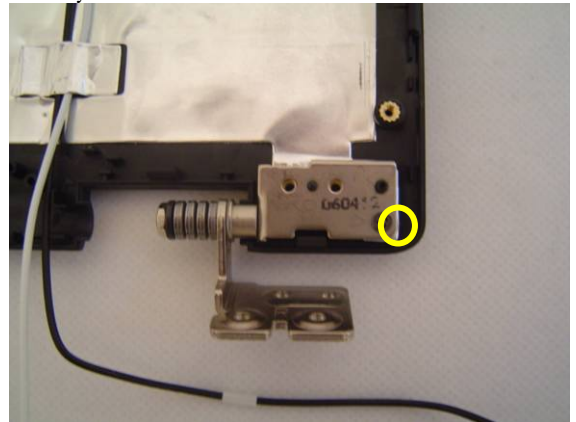
9. Disconnect the coaxial cable from LCD plane then take it away.



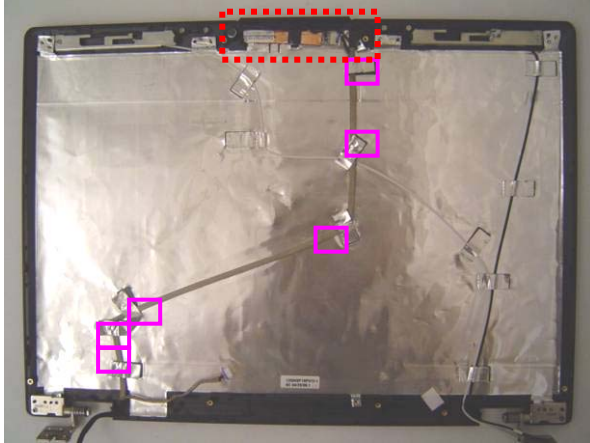
10. Remove 4 screws (M2*3) here then take away the LCD bracket.



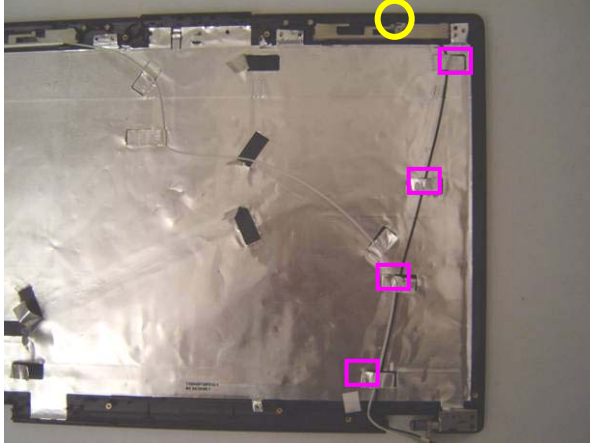
11. Remove 2 screws (M2*5) here and take them away.



12. Remove 6 pieces of tapes then take away the camera module.



13. Remove 1 screw and 4 pieces of tapes then take away the wireless black wire.



14. Remove 1 screw and 3 pieces of tapes then take away the white wire.

